

IndiaWilds®

Newsletter

Vol 11. Issue IX

September 2019

ISSN 2394 - 6946





Inside this issue:

Climate Crisis & India's Role	2
Conservation News	7
Equipment Discussions	11
Natural History	28
Wildlife Photography	30

Cover Page Photograph:

Gaur Snorting
by Sabyasachi Patra

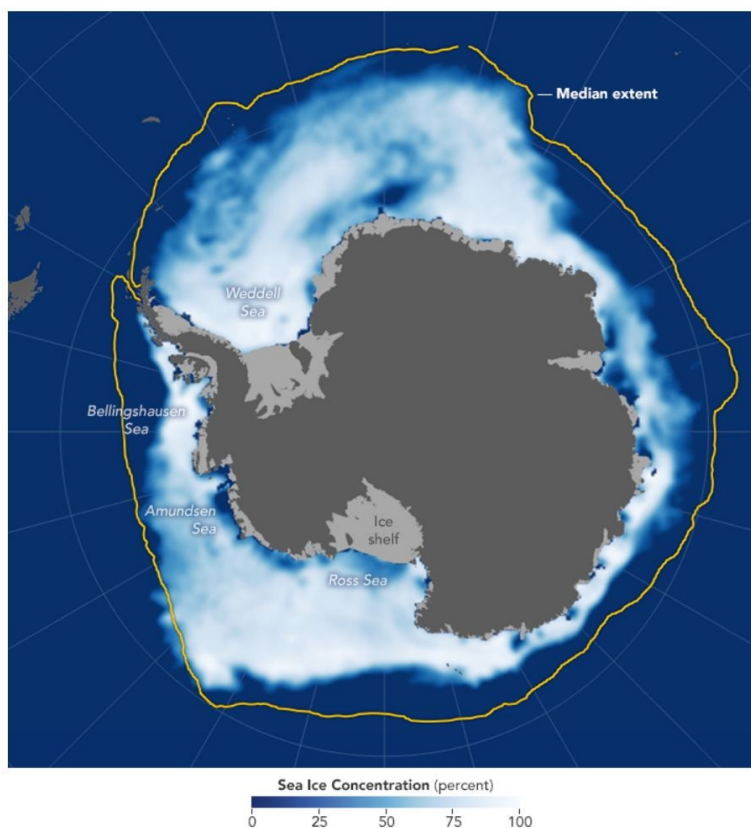
Climate Crisis & India's Role:

In 2018 Kerala had faced massive floods and landslides due to thoughtless constructions in the wetlands and river flood plains as well as changing the lay of the land in ecologically fragile areas. In 2019 the floods have repeated. The focus during and after the floods is to contain risk to human life as well as damage to property. However some of the ecological impacts are slowly unfolding in front of our eyes.

Climate Crisis is resulting in unprecedented change around the world. India this year faced very severe summer season. (<https://www.indiawilds.com/diary/indiawilds-newsletter-vol-11-issue-vi/>) 10 cities in India were the hottest on earth during May-June 2019. Since 2004 India has seen 11 of the 15 warmest years. And along with India, the entire globe is bearing the brunt of Climate crisis.

Climate Change & melting sea ice:

In far off Antarctica, the sea ice is melting. It was a mystery that was first observed couple of decades ago and the scientists were not sure about the reason because the sea water was too cold and couldn't have had melted the ice. So scientists found out that our wind pattern has



November 1 - 30, 2016

Shifting winds and warm air temperatures contributed to the record-low extent of sea ice around Antarctica in November.
(Photo Courtesy - earthobservatory Nasa)

changed since the beginning of the century and that is causing iceloss from the West Antarctic Ice Sheet in the Amundsen Sea. "Eastward wind anomalies at the shelf break enhance the import of warm Circumpolar Deep Water onto the Amundsen Sea continental shelf, which creates transient melting anomalies with an approximately decadal period. No anthropogenic influence on this process has been established. Here, we combine observations and climate model simulations to suggest that increased green-



house gas forcing caused shelf-break winds to transition from mean easterlies in the 1920s to the near-zero mean zonal winds of the present day. Strong internal climate variability, primarily linked to the tropical Pacific, is superimposed on this forced trend. We infer that the Amundsen Sea experienced decadal ocean variability throughout the twentieth century, with warm anomalies gradually becoming more prevalent, offering a credible explanation for the ongoing ice loss. Existing climate model projections show that strong future greenhouse gas forcing creates persistent mean westerly shelf-break winds by 2100, suggesting a further enhancement of warm ocean anomalies. These wind changes are weaker under a scenario in which greenhouse gas concentrations are stabilized.” (West Antarctic ice loss influenced by internal climate variability and anthropogenic forcing; Holland Paul et. al., Nature Geoscience volume 12, pages718–724 (2019)).

The United Nations Secretary General has said that to contain climate change actions need to be undertaken in several key areas. A new leadership group to drive industry transition to low carbon economy was also announced. However, there are several questions that need to be addressed.

Energy Transition:

Energy Transition has been identified as one of the key areas where our dependency on fossil fuel has to be reduced and power generation has to be shifted to renewable energy along with making significant gains in energy efficiency in all our products and processes. Efficiency can be a bad word if all it does is to ensure that we are solely focused on improving on areas, which



Coal mine in Jharkhand

Photo Courtesy - online media

should have been made redundant. So it would be important to focus on effectiveness.

There are various coal-fired thermal power plants working in India with various generating efficiencies. India's coal-fired power plants have efficiency levels that are way below global average (Centre for Science & Environment study, 2015) with average efficiency of 32.8 percent and Co2 emissions 14% higher than China. This data is shocking to say the least. However, nothing much happened after this study came out. For this study NTPC (National Thermal Power Corporation) didn't disclose its data and hence was rated based on publicly available data. This gives an escape route to blame the study.

These types of studies should have been mandated by the electricity regulatory commission to find out the actual state of affairs. Consumers do have the right to know about the state of affairs. If a power plant in their neighbourhood is spewing toxic air, higher CO2 and running at a much lower efficiency, then people can rightly question about the reason for existence of a particular power plant. However, today the data is not made public. The industries have a reason to avoid transparency and take short cuts. Pollution and Climate crisis is negatively impacting every one of us. So it is important that the citizens be given access to data. The power regulator has to mandate transparent online everyday data, which citizens and civil society groups can access at any point of time. Unfortunately there are very few groups in India who place the benefit of people above their business interests. The Government takes credit in waiving off all rules and legalities for businesses. The Minister for Environment, Forests and Climate Change routinely overrules the NBWL (National Board for Wild life) & expert committees to green light projects. Even data of daily pollution levels at different parts of cities are now not being shown. So monitoring and sharing data regarding power plants in a transparent manner with citizens and civil society is unlikely to happen anytime in India.

Till date the Green component in our economy and balance sheets are ignored. The pollution and impact on the fragile ecology is often willfully disregarded by the Government and its ministers. Environmental vandalism cannot continue forever as we the citizens are now facing massive health issues. People are bearing the brunt of climate crisis in form of sudden extreme weather events, which brings life to a standstill in not only cities but also in rural areas. Declaration of Red Alerts in metro cities during rains has become the new normal. Recently Mumbai faced flooding with severe loss of life and property. Commercial establishments obviously remain closed. When the financial capital of the country can be shut down due to sudden rains then it should have acted as wake up calls. However, these are becoming the new normal as the Government remains aloof and citizens try to cope up using their own limited means. We are clearly moving towards a tipping point where citizens will no longer be swayed by other partisan topics which are played to divert their attention from Climate Crisis triggered events. In all this the industry remains happily silent. In such an event how effective will be the impact of an industry leadership group to transition to a low-carbon economy is any ones guess.

Role of Industry:

The role of industry as a going concern is to make profits. Gone are the days when the companies were ethical and had concern for their surroundings and the people. In a letter to his son Dorab regarding development of Jamshedpur, Jamsetji Tata had written *"be sure to lay wide streets planted with shady trees, every other of a quick-growing variety. Be sure that there is plenty of space for lawns and gardens. Reserve large areas for football, hockey and parks. Earmark areas for Hindu temples, Mohammedan mosques and Christian churches."*

The ethical values of the society has plunged. So today instead of taking the time consuming and costly option of ensuring that the business adheres to all rules and doesn't harm environment and people, the corporate officials are more likely to take short cuts to get the environment and wildlife permissions. So when we are talking about industry transition, the industries are more likely to look at ways to make profit out of the Climate Crisis. No one is going to come due to an altruistic motive.



Despite mouthing platitudes about how Greta Thunberg, a child, is raising her voice to call for School strike for climate and brining the climate issues to the discussion table even though elders are closing their eyes to it, the industry is deeply rooted in its current ways to change.

Open Access:

Instead of different companies trying to develop technologies for climate change mitigation and benefiting from it, let the companies show their leadership and create open access technologies. Let the funding be given to ideas from around the world so that people will ideas can innovate. However, the rich nations and capitalist model will never allow this to happen. In the absence of any global consensus, let a few countries emerge to create open access technologies to combat climate change.

Leadership for India:

Given the kind of frugal innovation that India is known for, if India partners with African countries as well as some of the smaller nations that are going to drown due to rising sea levels, then India can establish itself as a leader among nations. Let the Government give small grants to individuals as well as to startups and set a chain of innovation running and become the hub for climate resilient technologies.

The Prime Minister of India has announced that India will in future generate 450 GW of energy from non-fossil fuels. The grants for climate crisis mitigation innovation will neatly fit into India's renewable energy plans. Together it can also help boost the manufacturing sector. So it is in India's interests to focus on mitigating climate change. However, the Government of India has also been decimating India's forests and instead creating plantations. This move is completely against the Nature-based solutions, which has been agreed upon as a key focus area by the UN Secretary General.

Urban Planning:

Today we are focusing on increasing the efficiency of our air conditioners so that they consume less energy. However, air conditioners can be a limited solution. ACs were created to fight the heat. However studies have shown that the use of Air Conditioners can give rise to upto 2 degrees centigrade increase in ambient temperatures.

(<https://www.indiawilds.com/diary/indiawilds-newsletter-vol-7-issue-v/>) However, we have to look at the traditional Indian style of building constructions. The houses were different. Today concrete houses share walls with each other resulting in lack of airflow. Together with lack of green areas and no water bodies to cool the air, the concrete houses heat up and are causing a heat island effect. If housing societies have sufficient green areas then it helps in shade and lower temperatures. Unfortunately in the green areas they don't plant trees. They just keep lawns, which take up more water. Tall hard growth trees give better shade and reduce the temperatures as well as do better in carbon sequestration. If a dense layer of trees are created then the overall temperatures can come down and also help in reducing the surrounding noise. Having ponds and lakes around buildings help the surrounding air to cool down. Unfortunately, people are in no mood to spare any areas for trees and ponds.

These days our metro cities, especially Mumbai, have buildings that are more than 50-60 floors tall. No one is bothered about additional energy spent in pumping water to such tall buildings? Neither are they bothered about the cost of power to operate lifts, as people will take lifts instead of climbing up the stairs. No fireman can be of help if there is an unlikely fire in those tall buildings, as the equipment of the firefighters won't reach the top floors of those tall buildings. So the municipal building codes have to change. And people need to wake up to the reality that by staying in those high-rise apartments they are leading a more carbon heavy lifestyle as well as putting their life at risk.

People will flock to our larger cities, which don't have land and are groaning and creaking under the massive population pressure for which they weren't designed for. The Government of India has to rethink its development model and encourage industries to move away from our big cities so that our cities get decongested. That will significantly reduce our problems and carbon footprint. A holistic approach is the need of the hour. However, is it prudent to expect that a Government, which is known for its headline management, will change its spots and start doing what is right?

As they say Hope flows eternal in human breast. So keep on raising your voice so that hopefully we can correct some of the wrongs that our generation has done and the Earth can still be habitable as we don't have a Planet B to move to when we destroy this planet.

Conservation News -

India is going to increase the share of non-fossil fuels to 175 GW by 2022, and will further take it to 450 GW: Prime Minister

World leaders have gathered in New York today for the United Nations Secretary General (UNSG) Climate Action Summit. The Summit is being called by UNSG Mr. António Guterres to ramp up climate actions worldwide. Speaking on the occasion, Prime Minister Shri Narendra Modi stated “We must accept that if we have to overcome a serious challenge like climate change, then what we are doing at the moment is just not enough; What is needed today, is a comprehensive approach which covers everything from education to values, and from lifestyle to developmental philosophy”.



Bringing attention towards India's efforts in always following a climate sensitive sustainable development pathway by mainstreaming climate change concerns in development policies, Shri Narendra Modi stated “Need, not greed has been our guiding principle. PM expressed that an ounce of practice is worth more than a ton of preaching. “In India, we are going to increase the share of non-fossil fuels to 175GW by 2022, and to further increase it to 450GW”, announced Shri Narendra Modi.

“We have launched the Jal Jeevan mission for water conservation, rainwater harvesting and for the development of water resources. India is going to spend approximately 50 billion dollars on this in the next few years”, the Prime Minister further informed the gathering.

Prime Minister further said that on the occasion of India's 73rd Independence Day, we have called for a people's movement to end the menace of single use plastic. PM expressed hope that this will create an awareness at a global level about the harmful effects of single use plastic.

Conservation News -

“On the International forum, almost 80 countries have joined our International Solar Alliance campaign. In order to make our infrastructure disaster resilient, India is launching a Coalition for Disaster Resilient Infrastructure.”, the PM invited UN Member states to join this coalition.

Earlier in his thought-provoking opening remarks the United Nations Secretary-General, Mr. António Guterres shed light on the significance of science and technology and its use as a powerful tool in combating climate change. “The climate crisis is caused by us and the solutions must come from us. We have the tools, technology is on our side, readily available technological substitutions already exists for more than 70% of today’s emissions”, said Mr. Guterres .

Having the key focus on raising ambition and accelerate action to implement the Paris Agreement, the Climate Action Summit focuses on nine interdependent tracks, which are led by 19 countries in total and are supported by international organizations. The Summit has brought together governments, private sector, civil society, local authorities and other international organizations to develop ambitious solutions in actionable areas. The Secretary-General has also prioritized a number of action portfolios. The key areas identified are the following:

- Finance: mobilizing public and private sources of finance to drive decarbonization of all priority sectors and advance resilience;
- Energy Transition: accelerating the shift away from fossil fuels and towards renewable energy, as well as making significant gains in energy efficiency;
- Industry Transition: transforming industries such as oil and gas, steel, cement, chemicals and information technology;
- Nature-Based Solutions: reducing emissions, increasing sink capacity and enhancing resilience within and across forestry, agriculture, oceans and food systems, including through biodiversity conservation, leveraging supply chains and technology;
- Cities and Local Action: advancing mitigation and resilience at urban and local levels, with a focus on new commitments on low-emission buildings, mass transport and urban infrastructure; and resilience for the urban poor;
- Resilience and Adaptation: advancing global efforts to address and manage the impacts and risks of climate change, particularly in those communities and nations most vulnerable.
- Mitigation Strategy: to generate momentum for ambitious NDCs and longterm strategies to achieve the goals of the Paris Agreement.
- Youth Engagement and Public Mobilization: to mobilize people worldwide to take action on climate change and ensure that young people are integrated and represented across all aspects of the Summit, including the six transformational areas.

Conservation News -

- Social and Political Drivers: to advance commitments in areas that affect people's well-being, such as reducing air pollution, generating decent jobs, and strengthening climate adaptation strategies and protect workers and vulnerable groups.

Watch : - <https://youtu.be/xYrFvAighgE>

It is noteworthy to point that India along with Sweden, supported by World Economic Forum is leading the 'Industry Transition' track meeting. India and Sweden together with other partners are launching the Leadership group within the Industry transition track. This initiative will provide a platform for governments and the private sector with opportunities for cooperation in the area of Technology innovation. This will help to develop low carbon pathways for industry.

New Leadership group to drive industry transition to low-carbon economy:

The United Nations Secretary-General António Guterres hosted the Climate Action Summit in New York ahead of the UN General Assembly. The Secretary-General called on all leaders – governments, the private sector, civil society, local authorities and other international organizations – to come with concrete, realistic plans that will boost ambition and rapidly accelerate action to implement the Paris Agreement.

Having the key focus on raising ambition and accelerate action to implement the Paris Agreement, the Climate Action Summit focuses on nine interdependent tracks, which are led by 19 countries in total and are supported by international organizations.

It is noteworthy to point that India along with Sweden, supported by World Economic Forum is leading the 'Industry Transition' track meeting.

A new initiative was launched on 23rd September at the UN Climate Action Summit to help guide the world's heaviest greenhouse gas emitting industries toward the low-carbon economy.

India and Sweden together with Argentina, Finland, France, Germany, Ireland, Luxembourg, the Netherlands, South Korea and the UK, as well as a group of companies including Heathrow Airport, LKAB, Mahindra Group, Royal Schiphol Group, Scania, SpiceJet, SSAB, ThyssenKrupp, Dalmia Cement, DSM and Vattenfall, announced a new Leadership Group for Industry Transition that will drive transformation in hard-to-decarbonize and energy-intensive sectors.

This global initiative will be supported by the World Economic Forum, the Energy Transitions Commission, Mission Innovation, Stockholm Environment Institute, and the European Climate Foundation among many others in an ambitious, public-private effort, to ensure heavy industries and mobility companies can find a workable pathway to deliver on the Paris Agreement.

In welcoming this new public-private partnership, Professor Klaus Schwab, Founder and Executive Chairman of the World Economic Forum said: "There is a huge level of support and enthusiasm in the private sector to engage with governments and peers to reduce emissions across their operations and value chains."

Conservation News -

Industry sector emissions, including those from hard-to-abate and energy-intensive sectors like steel, cement, aluminum, aviation and shipping are expected to be responsible for 15.7Gt by 2050. The international collaboration between countries and industry groups is critical to establish workable policy frameworks and incentives, and to enable joint investment into low carbon infrastructure.

In his statement Prime Minister Shri Narendra Modi said that “each one of us has to discharge climate responsibilities based on our situations and capacities. I hope that work under the industry transition track will facilitate early diffusion of technology and support to developing countries in this journey”.

Addressing a press conference, Union Environment Minister, Shri Prakash Javadekar said that the last two days have seen major takeaways including the decision that heavy industries who are doing their bit on their own, without any external help, have decided to have a low carbon path.

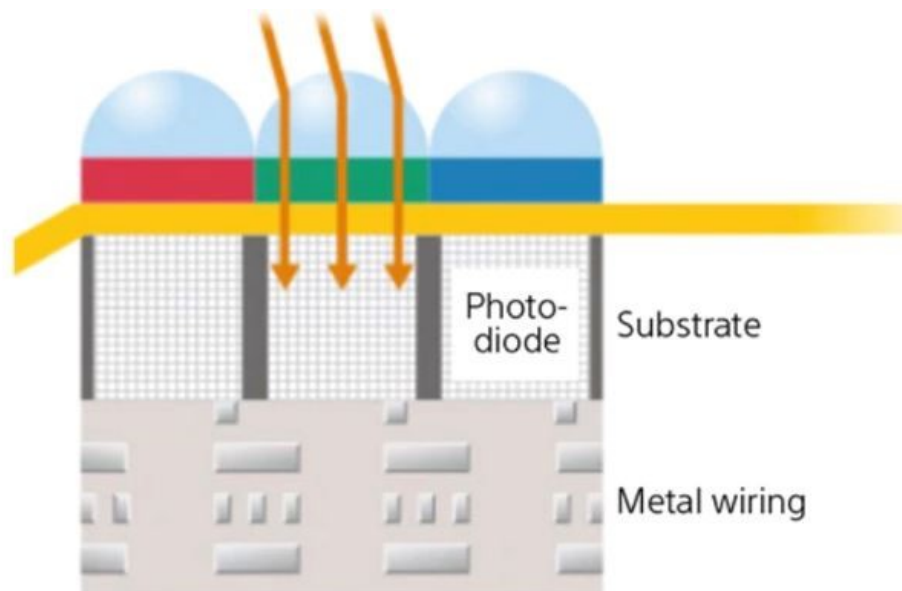
Equipment Discussions -

Sony announces new FX9 4k camera with 6k fullframe sensor:

Sony has announced a new E mount PXW-FX9 digital cinema camera as a successor to Sony FS7/FS7II.



Sensor: newly-developed 6K Full-Frame EXMOR sensor



Exmor R CMOS sensor in FS9 camera

Equipment Discussions -

15 stops Dynamic Range:

FX9 offers an exceptional 15+ stops of dynamic range – beyond the normal range of human perception – allowing for unprecedented creative freedom in colour grading and post. Camera operators can concentrate on framing the scene they want while relying upon the FX9 to capture every nuance and detail using either 4K 4:2:2 10-bit internal recording or 16-bit RAW external recording to an external recorder. The firmware to enable raw recording will be released on a future date. In grading, colourists can find colour and detail beyond the normal viewing abilities of the camera operator to create a final image that exactly portrays the mood of the scene.

7stop electronic variable ND filter

Output:

4K 4:2:2 in 10 bit records to dual XQD cards. Initially UHD. DCI 4k will be enabled later in December 2019. FHD 120p via extension kit. 16bit raw with XDCA extension kit

Dual ISO: ISO 800/4000

Catch the action with enhanced Fast Hybrid AF

Effortlessly track fast moving subjects with pin-sharp focus, even when using wide lens aperture settings to maintain a shallow depth of field with the camera's full-frame sensor. Developed by Sony's α camera engineers, enhanced Fast Hybrid AF combines phase detection AF for fast, accurate subject tracking with contrast AF for exceptional focus accuracy. In addition, Face Detection intelligently recognises and locks on to human faces.

The dedicated 561-point phase detection AF sensor covers approximately 94% of the whole image area width and 96% of height, allowing consistently accurate, responsive AF tracking, even with fast-moving subjects.

Customisable AF settings

FX9's comprehensive autofocus settings provide the creative flexibility to integrate with any project.

7-level AF transition speeds from Fast – switching between subjects as quickly as possible – to Slow, where speed is reduced to fit a more measured shooting style, such as a historical TV drama.

5-level AF subject shift sensitivity ranges from Locked-on – ignoring other moving subjects in the frame – to Responsive that switches focus from one subject to another – ideal for snapping between race cars as they speed by.

Equipment Discussions -

Image stabilization:

With the PXW-FX9, image stabilization info from the built-in gyro is stored in the metadata so the shooter can choose to turn stabilization on/off or adjust the level of stabilization for each shot when using E-mount lenses, Sony's Catalyst Browse (v. 2019.2) clip-organizing tool, and most popular NLE systems. Designed to smooth handheld shots to the look of a stabilized gimbal, this feature offers impressive stabilization control.

Imager Scan Mode	Recording resolution	Frame Rate			
		1-30p	31-60p	100,120p	150,180p
Full-Frame	DCI 4K 4096x2160	✓ *	✓ ***	-	-
	QFHD 3840x2160	✓	✓ ***	-	-
	Full-HD 1920x1080	✓	✓	✓	✓ *
Super 35	DCI 4K 4096x2160	✓ *	✓ *	-	-
	QFHD 3840x2160	✓	✓	✓ **	-
	Full-HD 1920x1080	✓	✓	✓	-

Watch : <https://www.youtube.com/watch?v=JO625LoqxGo>

Selectable frame rates in both full-frame & Super 35

Choose your desired frame-rate from 1fps up to 180fps* for impressive quick and slow-motion footage. FX9 creates an immersive image with a wide angle look and shallower depth of field provided by its full-frame sensor in combination with quick and slow-motion. Engage your audience with this new creative look. FX9 also offers a Quality priority setting** that maximises full HD slow motion image quality with advanced oversampling technology.

*Up to 120fps with Ver1.0. Full-HD 180fps will be supported with future firmware

**In Full-frame scanning mode: selectable at 1-30fps / In S35 scanning mode: selectable at 1-60fps

*Supported in future firmware update

**Supported in future firmware update. RAW output only

*** Supported in the future firmware update. Scanning area is cropped around 83% of full-frame and 122% larger than S35. (diagonal)

Equipment Discussions -

4-channel audio input and recording

FX9 offers superb audio capabilities with independent control dials for each channel. In applications such as interview, 4-channel audio recording enables simultaneous use of an external microphone for recording ambient sounds, the built-in microphone for voice memos by the operator, and two optional UWP Series wireless microphones for voice of interviewer and interviewee. In addition, using the optional XLR-K3M, XLR-K2M or XLR-K1M XLR adapter – with two extra XLR inputs – allows even more devices to be connected.



Sony's new XDCA-FX9 extension unit provides the flexibility of adding dual-link streaming and file transfer via Sony's XDCAM air service for a quick news production workflow. This module also provides additional ports to power pro camera accessories and in a future update, 16-bit raw output and Sony wireless mic receiver compatibility.

Cost: \$10998 USD

B&H link:

https://www.bhphotovideo.com/c/buy/Sony_PXW_FX9_XDCAM_6K_Full_Frame_Camera_System_Body_Only_/Ntt/Sony%2BPXW-FX9%2BXDCAM%2B6K%2BFull-Frame%2BCamera%2BSystem%2B%2528Body%2BOnly%2529/N/o/kw/search/BI/19990/KBID/13252/DFF/d10-v1-t12

How many of you are planning to buy the Sony FS9 camera?

Equipment Discussions -

Canon has announced the EOS 90D DSLR and EOS M6 Mark II mirrorless cameras

Canon has finally officially released the EOS 90D DSLR and EOS M6 Mark II mirrorless cameras. These cameras sporting 32.5 MP sensors. Earlier videos with their specifications had been leaked. Nevertheless, Canon has now confirmed that these two cameras have APS-C sized sensors like their predecessors. Both the two cameras have identical DIGIC 8 image processor. Both can record UHD 4K videos upto 30p and has DPAF in live view mode. The electronic shutter can shoot still photo at a humongous 1/1600th of a second.

The 80D could shoot still photos at 7fps. The 90D can click stills at 10fps. With 45 all cross point AF sensors, 100 percent view finder coverage and 27 points able to autofocus at f8 aperture, this is a very capable camera. The 80D is in our kit bag along with the 1DXII and other cameras and has proved to be very capable. I am sure the EOS 90D will also be similarly successful.



The EOS M6 Mark II can shoot at 14 frames per second in AF and AE. This is massive for still photographers.

PRESS RELEASE

Two Cameras, Two Ways: Canon U.S.A. Announces a Pair of High-Speed Advanced Amateur ILC Cameras, The EOS 90D and EOS M6 Mark II

Equipment Discussions -

Both Cameras Feature a 32.5 Megapixel APS-C CMOS Sensor, High-Speed Continuous Shooting, Dual Pixel CMOS AF and Uncropped 4K UHD Video Recording Capability.

MELVILLE, NY, August 28, 2019 – It is often said that in life, having two options is generally considered a good thing. Today, Canon U.S.A., Inc., a leader in digital imaging solutions, introduced two advanced amateur ILC cameras, the EOS 90D and EOS M6 Mark II. These two models usher in the next generation of Canon APS-C sensor cameras and share many similar characteristics, while also being uniquely different at the same time. Both cameras are designed to fit the needs and preferences of a variety of photographers taking into account their skill level and subject matter.

“As camera technology continues to evolve, we find ourselves in a constant state of innovating and challenging the status quo to meet the various desires of our end-users,” said Kazuto Ogawa, president and chief operating officer, Canon U.S.A., Inc. “With the introduction of these cameras, Canon is reaffirming its continued commitment to a broad range of photographers by offering them the digital imaging tools required to meet their needs.”

The EOS 90D and EOS M6 Mark II include many core features that are identical and hold true to Canon’s imaging excellence. These features include:

- 32.5 Megapixel CMOS(APS-C) Sensor
- DIGIC 8 Image Processor
- 4K UHD up 30p and 1080p FHD up 120p video recording with no crop
- Dual Pixel CMOS AF in Live View with 5,481 manually selectable AF positions
- Electronic shutter with a minimum of up to 1/16000th
- Built-in Wi-Fi and Bluetooth Technology

The Performance DSLR Way: The EOS 90D

The EOS 90D DSLR camera is ideal for the advanced-amateur photographer who values the look-and-feel of the DSLR body and benefits such as an optical viewfinder, 3.0-inch vari-angle touch screen LCD, addition of the multi-controller and a shutter button feel of professional EOS cameras. Now capable of shooting up to 10 frames-per-second (fps), a drastic increase from the 7.0 fps with the EOS 80D, users can capture all of the action on the sidelines of a football game or wildlife while on safari. Assisting in a photographers’ ability to capture the action is the 45-point all-cross type AF system, 100 percent viewfinder coverage and now supports up to 27 points in f/8 metering. In addition, the new AE sensor boasts an impressive 220,000 pixels and utilizes EOS iTR AF (face priority) detection. Together, these two features allow for the detection and tracking of faces in various environments and shooting situations while using the viewfinder.

Equipment Discussions -

The Compact-and-Lightweight Way: The EOS M6 Mark II

Bringing the controls and functionality of a Canon EOS DSLR into a compact mirrorless camera, the EOS M6 Mark II is destined to wow advanced-amateur photographers. With its enhanced usability, the EOS M6 Mark II is capable of shooting up to 14fps with AF and AE tracking as well as capturing a remarkable 30fps when using RAW Burst Mode with pre-shooting capabilities. The camera also features touch-and-drag AF when using the optional EVF-DC2 electronic viewfinder. A popular and notable benefit of Canon mirrorless cameras allows photographers to select AF positions with the touch of a finger. The EOS M6 Mark II also includes Canon's Dual Pixel AF with Eye AF Servo to help ensure images are in sharp focus and a 3.0-inch, touch-panel LCD screen with tilt-option to help ensure a user's portrait or selfie game is and stays on point.

Pricing and Availability

The Canon EOS 90D is scheduled to be available mid-September 2019 for an estimated retail price of \$1199.00 for body only, \$1349.00 for EF-S 18-55mm f/3.5-5.6 IS STM kit and \$1599.00 for EF-S 18-135mm f/3.5-5.6 IS USM kit*. The EOS M6 Mark II is scheduled to be available late September 2019 in both black and silver for an estimated retail price of \$849.99 for body only, \$1099.00 for EF-M 15-45mm f3.5-6.3 IS STM and EVF-DC2 kit and \$1349.00 for EF-M 18-150mm f3.5-6.3 IS STM and EVF-DC2 kit*.

Equipment Discussions -

Canon launches RF 15-35 f2.8 L IS USM lens and RF24-70 f2.8 L IS USM lens

Canon has announced two additional lenses to their RF mount lens line up. The RF 15-35 f2.8 L IS USM and RF24-70 f2.8 L IS USM lenses being launched as premium L series lenses priced **at \$2299 US Dollars**. These lenses are similar in size



to the corresponding EF mount lenses both has image stabilization which is effective for 5 stops and also works with the inbuilt image stabilization of the current RF mount camera bodies. By launching these premium lenses Canon is indicating it's serious intention in making RF as the successor of the EF mount. Canon has also indicated that the RF mount lenses are better than the EF mount lenses as the EF mount was restricting its ability to design better quality glass than is currently possible.

The details of the lens elements used in these lenses is not provided by Canon. These two lenses will be available in late September 2019. And Canon has also indicated that by end of this year it will be launching a RF70-200 f2.8 IS USM lens. I am sure next target would be telephoto lenses in the RF mount.

We need to see when Canon is going to include the RF mount in its professional cinema cameras.

New Canon RF Mount Lenses Bring Optical Excellence to Pro and Advanced Amateur Photographers

RF15-35mm F2.8 L IS USM and RF24-70mm F2.8 L IS USM Lenses Further Cement the Company's Commitment to the EOS R Full-Frame Mirrorless Camera System

MELVILLE, NY, August 28, 2019 – The time has come and the wave of momentous advancements in the world of the EOS R full-frame mirrorless camera system continues as Canon U.S.A., Inc., a leader in digital imaging solutions, today announced the introduction of the RF15-35mm F2.8 L IS USM and RF24-70mm F2.8 L IS USM lenses. With their large, bright F2.8 aperture, a zoom range that covers a wide range of shooting scenes and image stabilization (IS), as well as Nano USM – these lenses are sure to become workhorse lenses for professional and advanced amateur photographers.

“As the emergence of mirrorless cameras continue accelerating the market and with Canon’s deeply rooted heritage in optics, we are excited to expand the lens offerings and acquiesce the needs of EOS R users,” said Kazuto Ogawa, president and chief operating officer, Canon U.S.A., Inc. “The technical improvements and features within these new RF lenses are

Equipment Discussions -

needed to drive the market forward.”

RF15-35mm F2.8 L IS USM

As Canon’s first F2.8 wide zoom lens equipped with IS for full-frame with a CIPA standard of five stops, the RF15-35mm F2.8 L IS USM lens is furnished with edge-to-edge sharpness throughout the zoom range to capture clear images with high image clarity from the center of the image throughout the entire focal range. Speaking of focal range, the RF15-35mm is an ultra wide range that allows for broader photographic expression with more emphasis on perspective. Other components include:

- High Image quality has been achieved due to the large diameter mount and shorter back focus of the EOS R system.
- Total size of the lens is equivalent to the existing EF lens, but allows for IS, wider field of view and the control ring indicative of the RF lenses.
- Drip and dust resistant and ideal for landscape, architecture, nature, sports and portrait photography needs.

RF24-70mm F2.8 L IS USM

Created for a wide range of shooting scenarios from street scene snapshots to movie shooting, the RF24-70mm F2.8 L IS USM lens remains portable while equipped with IS. Other components include:



- Equivalent to the size of the EF counterpart but with Image Stabilization.
- High speed and high precision Nano USM motor for accurate, silent focus operation for stills and moving shooting.

Equipment Discussions -

- Takes moving shooting into account with focus breathing suppression during manual focus operation, sensitivity setting during MF operation, usage of the focus ring is adjustable and customization of the control ring to assign aperture, shutter speed, ISO speed and exposure compensation as desired.

Free Firmware Update

In addition, a new, free downloadable firmware update will be released in late September for the EOS R system. Those interested can download the update for their respective system via the [EOS R](#) and [EOS RP](#) support pages. The update will improve three main functions:

- Eye detection AF
- AF frame display delay
- Subject identification

The firmware update aims to add detection of the subject's eye when the subject is at a distance, improve overall AF frame tracking for moving subjects, as well as improve initial subject recognition and start tracking when subjects are at a distance.

Pricing and Availability

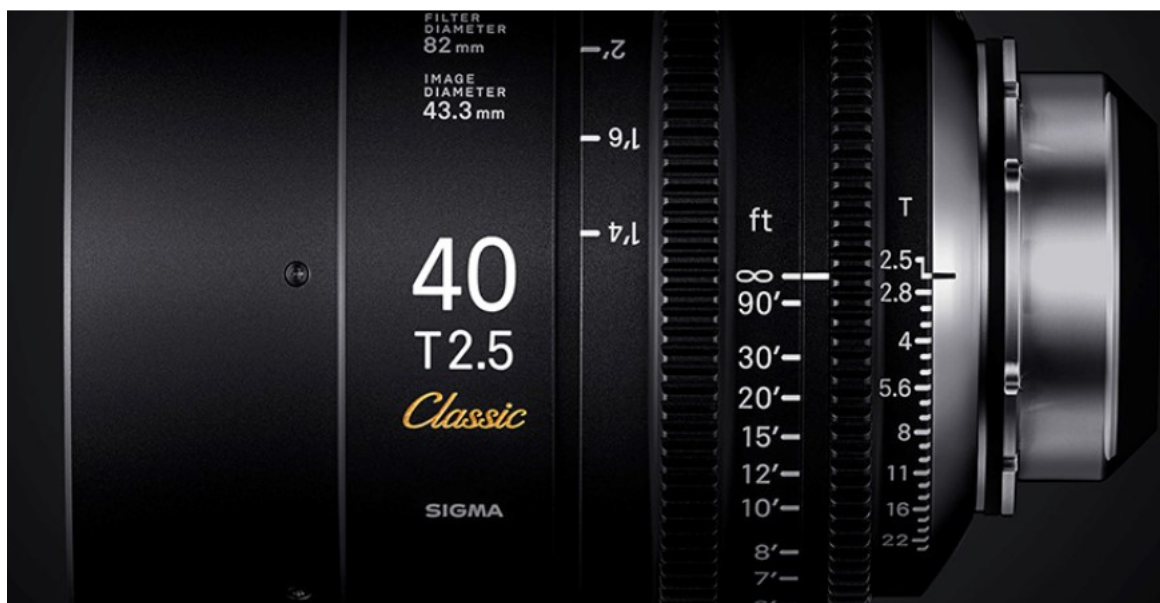
The Canon RF15-35mm F2.8 L IS USM and RF24-70mm F2.8 L IS USM lenses are both scheduled to be available in late September 2019 for an estimated retail price of \$2,299.00* each. To complete the trinity of F2.8 lenses, the RF70-200mm F2.8 L IS USM lens is scheduled to be shipping within the second half of 2019 – stay tuned!

Equipment Discussions -

Sigma launches FF Classic Prime Line of Cine lenses

State-of-the-art resolution meets the classic “look”. SIGMA CINE LENS welcomes a new series “FF Classic Prime Line” to the lineup. With cutting-edge technology, SIGMA’s new “Classic Art Prime” offers unrivaled expression for artists.

The SIGMA Corporation is pleased to announce the launch of “FF Classic Prime Line” as a new series in the SIGMA CINE LENS.



FF High Speed Prime Line has been offering the highest resolving power in its class, that is compatible with 8K shooting with large format sensors, while achieving outstanding compact design. Based on this product line, the FF Classic Prime Line incorporates more non-coated optical elements to achieve unrivaled expression. It retains the high resolution capability that SIGMA CINE LENS is well known for, and offers a unique combination of low contrast and artistic flare/ghost in the image. As with all other lenses from the FF High Speed Prime Line, it creates beautiful bokeh effects to improve creativity.

FF Classic Prime Line has implemented newly developed coatings on the glass elements and offers consistent T value across the lineup (14mm and 135mm at T3.2 and the rest of the lenses at T2.5). This will greatly contribute to the effective workflow in postproduction. Furthermore, it is compatible with the communication protocol of Cooke “/i Technology”, thus an ideal tool for shooting and editing with the latest technology, such as VFX. A special coating is implemented on the front and rear elements so that the lens durability is ensured as with all other cine lenses from SIGMA.

“Classic Art Prime” is a new solution from SIGMA that is required for the most advanced technology for classical expression. The “look” that FF Classic Prime Line can offer will enable cinematographers to explore new possibilities in movie creation.

Launch: End of 2019

Only sold as a set of 10 primes.

Equipment Discussions -

* /i is a registered trademark of Cooke Optics Limited used with permission.

* The Appearance and specifications are subject to change without notice.

* From conventional cine lenses, it is not possible to apply for the Mount Conversion Service for this “FF Classic Prime Line”.

Common specifications

- PL mount (/i Technology compatible)
- Image circle diameter: FF 43.3mm
- Illumination circle diameter: over 46.3mm
- Focus ring: Marked in feet
- Number of diaphragm blades: 9 (rounded diaphragm)

	Focal Length	Aperture	Number of diaphragm blades	Close Focus ¹	Front diameter	Filter Size	Length ²	Weight ³	FF ⁴	S35 ⁵	APS-C ⁶
14mm T3.2 FF	14mm	T3.2 to T25	9 (Rounded diaphragm)	0.27m /11"	95mm	-	111.5mm	TBD	104.3°	82.6°	80.5°
20mm T2.5 FF	20mm	T2.5 to T25	9 (Rounded diaphragm)	0.276m /11"	95mm	-	110mm	TBD	84.0°	63.2°	61.3°
24mm T2.5 FF	24mm	T2.5 to T25	9 (Rounded diaphragm)	0.25 m /10"	95mm	82mm	87mm	TBD	73.7°	54.3°	52.6°
28mm T2.5 FF	28mm	T2.5 to T25	9 (Rounded diaphragm)	0.30m /1'	95mm	82mm	99.7mm	TBD	65.5°	47.4°	45.9°
35mm T2.5 FF	35mm	T2.5 to T25	9 (Rounded diaphragm)	0.30m /1'	95mm	82mm	87mm	TBD	54.4°	38.7°	37.4°
40mm T2.5 FF	40mm	T2.5 to T25	9 (Rounded diaphragm)	0.40m /1'4"	95mm	82mm	123mm	TBD	48.5°	34.2°	33.0°
50mm T2.5 FF	50mm	T2.5 to T25	9 (Rounded diaphragm)	0.40 m /1'4"	95mm	82mm	94mm	TBD	39.6°	27.6°	26.7°
85mm T2.5 FF	85mm	T2.5 to T25	9 (Rounded diaphragm)	0.85 m /2'10"	95mm	86mm	118.9mm	TBD	23.9°	16.5°	15.9°
105mm T2.5 FF	105mm	T2.5 to T25	9 (Rounded diaphragm)	1.00m /3'4"	95mm	-	126.2mm	TBD	19.5°	13.4°	12.9°
135mm T3.2 FF	135mm	T3.2 to T25	9 (Rounded diaphragm)	0.875m /2'11"	95mm	82mm	106.9mm	TBD	15.2°	10.4°	10.0°

¹ Close focus distance is measured from the image plane

² Front to mount flange

³ Without lens support foot

⁴ Horizontal angle of view for a full-frame camera aperture (aspect ratio 1:1.5, dimensions 36 mm x 24 mm / 1.42" x 0.94")

⁵ Horizontal angle of view for a super 35 digital cinema camera aperture (aspect ratio 1:1.8, dimensions 24.6 mm x 13.8 mm / 0.97" x 0.54")

⁶ Horizontal angle of view for an APS-C camera aperture (aspect ratio 1:1.5, dimensions 23.7 mm x 15.7 mm / 0.93" x 0.62")

The specifications are subject to change without notice.

Equipment Discussions -

Blackmagic Announces Video Assist 12G monitor recorder

Blackmagic Design today announced Blackmagic Video Assist 12G which are new models of the company's popular combined monitoring and recording solutions. These new models feature brighter HDR screens, built in scopes, upgraded batteries, 12G-SDI and much more. Blackmagic Video Assist 12G will be available in September 2019 from Blackmagic Design resellers worldwide from US\$795.



Blackmagic Designs new Video Assist models add large screen HDR monitoring to any camera, as well as better recording codecs, scopes and professional focus assist tools.

The new Blackmagic Video Assist 12G HDR adds professional monitoring and recording to any SDI or HDMI camera in all HD, Ultra HD, 2K and 4K DCI formats. The new improved design includes innovations such as brighter screens for HDR work, tally indicator, 4 built in scopes, enhanced focus assist features, 3D LUTs and native Blackmagic RAW recording from supported cameras. With 12G-SDI and HDMI 2.0 on both 5" and 7" models, customers get support for recording from virtually any device in all formats up to 2160p60. A brighter touch screen ensures a better view of their recording when shooting HDR digital film, or when shooting outdoors in sunlight. The new design also features upgraded batteries and supports two standard Sony L-Series batteries. This means Blackmagic Video Assist 12G is incredibly versatile and is the perfect solution for the next generation of digital cinema shoots, live production mastering, broadcast testing and measurement.

There are two models of Blackmagic Video Assist 12G, with each model including an innovative touch screen user interface with deck controls, as well as a large screen to view recordings. The Blackmagic Video Assist 7" 12G model also includes 2

Equipment Discussions -

media slots, while both the 5" and 7" models include 12G-SDI for high frame rate Ultra HD, analog inputs for audio, USB-C external disk recording, plus a front panel speaker and side mounted headphone jack. Customers also get 2 rear battery slots for mounting Sony L-Series batteries, so customers have enough power for the brighter HDR screens and higher speed Ultra HD electronics. A 12v universal power supply is included for studio or on location use.

Blackmagic Video Assist 12G HDR is an ideal upgrade for cameras, as it's super bright 2500nit display is bigger than the tiny displays found on consumer cameras, plus users are also adding professional focus assist features and better quality file formats. Video Assist is also a great solution for professional cameras because customers can use it to upgrade older broadcast cameras to modern file formats used on the latest editing software. No matter what editing software customers use, Video Assist lets customers support them all, as customers can record in Apple ProRes, Avid DNx and Blackmagic RAW. With both HDMI and 12G-SDI inputs customers can connect it to any consumer camera, broadcast camera or even DSLR cameras. Then, on supported cameras, customers can even upgrade to RAW style workflows with Blackmagic RAW.

The innovative touchscreen LCD user interface provides incredible control. On screen, there are dedicated buttons for play, stop and record, plus a mini timeline for scrolling through their recordings. Customers can even image swipe to jog. The LCD includes a heads up display of timecode, video standard, media status as well as audio meters. Scopes can be enabled via the touch screen as well as focus and exposure assist. Plus customers can load and save 3D LUTs.

Video Assist uses commonly available SD card media, so customers can record to flash memory cards that are easy to obtain. The files are small enough to allow long recordings on standard SD cards or the faster UHS-II cards. The larger Video Assist 12G 7" model even includes 2 SD card slots so customers can swap out any full cards even during recording, allowing infinite length recording. Standard SD cards or the faster UHS-II cards are perfect for broadcast because they are small, high speed and affordable.

If recording to other media types is required, then the USB-C Expansion port lets customers plug in an external flash disk for recording. Imagine adding a Blackmagic MultiDock 10G for easy SSD compatibility with other recorders such as Blackmagic HyperDeck models. Customers even get on screen menus for managing external disks using the touch screen.

Video Assist features a wide range of video and audio connections such as multi-rate 12G-SDI for SD, HD, and Ultra HD SDI devices. HDMI is included for HDMI cameras and monitoring to consumer televisions and video projectors. The 7 inch model features Mini XLR inputs which are provided for audio input from microphones and external audio mixers. Video Assist even includes a 12V DC power connection with locking power connector.

Customers will be ready for the latest HDR workflows with support for the latest HDR standards and an extremely bright screen with a wide color gamut. Plus the high brightness screen makes outdoor shooting in bright sunlight possible. The built in scopes even change to HDR scopes when working in HDR formats. Files are tagged with the correct HDR information then SDI and HDMI inputs will also automatically detect HDR video standards. Static metadata PQ and HLG formats are handled according to the ST2084 standard. The bright LCD has a wider color gamut so it can handle both Rec.

Equipment Discussions -

2020 and Rec. 709 colorspace. The built in Video Assist LCD color gamut can even handle 100% of the DCI-P3 format.

Video Assist features full internal waveform monitoring so customers can ensure compliance to broadcast standards and it also works great as a portable waveform monitoring solution. The waveform display provides a traditional luminance (brightness) levels view of the video inputs or the playback signal. The vectorscope display allows customers to see the intensity of color at 100% SDI reference levels. Customers also get an RGB parade display which is ideal for color correction



and checking for illegal levels. Histogram shows the distribution of white to black detail in their images and highlights or shadows clipping. The built in scopes can even be overlaid on live video, or as a small picture in picture view at the top right of the scope.

The SDI and HDMI connections are multi-rate, so handle SD, HD, and Ultra HD. SD formats include NTSC and PAL. 720p HD standards include 720p50 and 59.94p. 1080i HD interlaced formats include 1080i50 and 59.94. 1080p HD formats include 1080p23.98, 24, 25, 29.97, 30, 50, 59.94 and 60p. Customers can even do 1080 PsF formats. Ultra HD is supported up to 2160p59.94. Customers can even record 2K and 4K DCI rates up to 25p for digital film work

Video Assist works with industry standard 17 and 33 point 3D LUT files, or customers can work with the built in LUTs such as Extended Video, Film to Video, Film to Rec.2020 and more.

Side view of Blackmagic Design Video Assist 12G SDI monitor recorder

Video Assist records using standard open file formats so customers don't have to waste time transcoding media. Recording works in industry standard 10-bit ProRes or DNx files in all formats and from all HDMI or SDI cameras, as well as 12-bit Blackmagic RAW when connected to supported cameras. Best of all media files work on all operating systems.

Blackmagic RAW is a revolutionary new format designed to capture and preserve the quality of the sensor data from cameras. Video Assist supports Blackmagic RAW recording from popular cameras such as Panasonic EVA1 and Canon C300 MK II. This eliminates the problems with popular camera formats such as H.264, which are highly compressed resulting in noise and processing artifacts. It also saves camera settings as metadata so customers can set ISO, white balance and exposure, then override them later while editing, all without any loss of quality. Blackmagic RAW files are also small and fast to

Equipment Discussions -

use making them easy to work with.

Blackmagic Video Assist 12G includes a built in professional audio recorder that's much better quality than the audio quality found in most cameras, eliminating the need to carry around extra audio equipment. When working in SDI formats, customers can record 2, 4, 8 or 16 channels of audio in real time. For connecting microphones the Video Assist 7" model has two XLR analog audio inputs with phantom power that support the high definition audio sample rate of 192 kHz at uncompressed 16 and 24 bit per sample. Customers can monitor using on screen audio meters with user selectable VU or PPM ballistics.

Multiple languages are fully supported so customers don't need to learn another language to use it. Support is included for English, Chinese, Japanese, Korean, Spanish, German, French, Russian, Italian, Portuguese and Turkish.



Blackmagic Design Video Assist 12G SDI monitor recorder back view showing Sony L series batteries

The files from Blackmagic Video Assist 12G are common and are compatible with all operating systems or in most video software. Media can be formatted using ExFAT or HFS+ so customers can easily access the media on computers and access the files like regular disks. DaVinci Resolve is perfect for use with Video Assist because it features editing, color correction, audio post production and visual effects all in one software application.

"The original Blackmagic Video Assist monitors and recorders were very popular and a fantastic way to upgrade older cameras, as well as for use in general broadcast areas of the television industry," said Grant Petty, Blackmagic Design CEO.

"These new models are an incredible improvement and incorporate all the lessons we have learnt from our customers in Hollywood. They have brighter LCD screens, 12G-SDI, Blackmagic RAW, better focus assist tools, presets, 3D LUTS and much more! They are so nice and it's very exciting!"

Equipment Discussions -

Blackmagic Video Assist 12G Features

- Supports live production, digital signage and archive use.
- Modern design with fast to use touch screen controls.
- Upgrades cameras to better monitoring and better record codecs.
- Large LCD screen for digital film style focus assist tools.
- SD/USH-II card support for commonly available media.
- Records direct to external USB-C media disks.
- 12G-SDI and HDMI for recording in SD, HD and Ultra HD.
- Advanced HDR support with bright 2500nits wide gamut LCD.
- Built in scopes include waveform, vector, parade and histogram.
- Latest Multi Rate 12G-SDI technology for SD, HD and Ultra HD.
- 3D LUTs can be applied for both monitoring and recording.
- Standard open file formats compatible with popular software.
- Records Blackmagic RAW from supported third party cameras.
- Professional multi channel digital and analog audio.
- Localized for 11 popular international languages.
- Works with popular NLE software such as DaVinci Resolve.

Availability and Price

Blackmagic Video Assist 12G will be available in September 2019. The 7 inch model will cost \$995 and the 5 inch model US\$795, excluding duties, from Blackmagic Design resellers worldwide.

Natural History -

COUNTRY NOTEBOOK: A Tiger of the Treetops: M.Krishnan:- 7 March 1971

The Sunday Statesman (shared by Shri. Saktipada Panigrahi)

Crested Hawk-Eagle

"IN September, going along a forest road at the foothills of the Nilgiris I saw a bird of prey in a treetop far ahead of me. It was sitting hunched on a horizontal branch, tearing with its beak at something held in its talons.

I was curious to know what it had killed, the prey seemed to be no bird, being a brown-grey mass with no feathers. It is a



sound rule to presume that any bird you can see has seen you already, for a bird's vision is infinitely sharper and longer than ours. But this was bent on what it was doing, literally bent over its prey, and I thought I could creep up from behind for a closer look.

In this I succeeded better than I had hoped to. I got right up to the tree it was on without its being aware of me, but the bole hid it from view. Keeping my body behind the bole, I leaned my head out to one side and peered up.

It was a Crested Hawk-Eagle and its victim was a young hare - that much I could see at once. I could get only a back view of the bird, but the thick, powerful legs, feathered white to the toes, and the dark white-tipped plumes on top of the head dancing in the breeze is unmistakable. Evidently the kill had been made only minutes previously - the belly skin had been flayed and the bird was tearing at the flesh, and a slow, dark drop of viscous blood dropped down from the bough.

I kept still and silent, but all at once it knew I was there. It lifted its head from the hare, and keeping the body immobile, slowly turned its head to look down at me along its back; one glaring cadmium-yellow eye and then both as the face was turned further round stared down at me and then it lifted its wings slightly, took a small hop along the bough, and shed into the air the hare held in both feet, with only its head and long ears dangling down from the comprehensive clutch of the talons. With strong even beats of its powerful wings the Hawk-Eagle crossed the clearing, flying low, rose effortlessly above the tree-line sailed beyond and dropped out of sight behind the trees.

That hare was only three quarters grown and probably weighed only three pounds but still I felt surprised at the ease with which the bird handled its prey - after all that Crested Hawk-Eagle which was only a little larger than a Common Kite (though it had powerful pillar-like legs and thick murderously taloned toes) could not have weighed much over four pounds - from its slim compact build I thought it was a male - as in most birds of prey, the female is bigger built and more powerful.

Years ago in a rather similar open tree forest, I saw a Crested Hawk-Eagle carrying a fully grown hare, and more recently a giant squirrel. There are eagles much larger in size than this hawk-eagle, but this is a far bolder and fiercer hunter than they, in fact, the Hawk-Eagles as a tribe are among the greatest hunters among birds, and attack and kill prey larger than themselves, such as peafowl, which few of larger eagles do.

Though a handsome and impressive bird when seen from near from near its mottled browns and yellows merge with the colour and texture of bark and boughs, and it is inconspicuous in the treetops which it loves. It flies strongly and I think it has a longer wing than text-books give it credit for and it soars at times as well, but it is essentially a bird of tree-tops.

From its elevated perch it keeps a sharp lookout, often bobbing and angling its head to get a sharper focus, for something to come out of the cover into the open a bird, or a small mammal or even a snake. It drops swiftly down on its victim and the powerful talons squeeze the life out of it, the beak being also used to kill it at times. Its mode of hunting is more a specialised kind of thug-gery than the long soaring flights and spectacular stoops of the eagles and falcons - in fact it hunts rather like a Short-winged Hawk, lurking in cover to kill, and that is probably why it is called a Hawk Eagle."

- M. Krishnan

This was published on 7 March 1971.

Wildlife Photography - **Tiger in Sunderbans by Vipin Sharma**



Tiger mating by Sandipan Ghosh



Wildlife Photography - **Leopard by Shyamala Kumar**



Nightjar by Mrudul Godbole



© Mrudul Godbole

Wildlife Photography -

Emerald-Cuckoo-(Juvenile) by Samrat Sarkar



Metallic Flea Beetles by Abhishek Jamalabad



Abhishek Jamalabad

Wildlife Photography -

Common Silverline by Prajwal Ullal



Leaf Weevil by Arun Acharjee



Wildlife Photography -

Tutari flowers by Abhishek Jamalabad



Tiger in Corbett by Sabyasachi Patra





This is the 129th issue of IndiaWilds. The cover page photo is that of a wild Gaur (*Bos gaurus*) snorting. Generally these massive gaurs avoid people. However, when provoked due to some reason they can cause grievous injury. This image of the gaur can be philosophically seen as representative of nature. We keep on harming nature. We clear forests, we dig up hills and use the stones for building houses and roads. We cut up mighty mountains for roads, railways, bridges and other projects. We stop flow of rivers by creating dams. Nature keeps on accepting our blows. However, whenever we go too far, nature hits back with fury. Many lives are lost and civilisations have been wiped away in the past due to violent backlash of nature. Today Earth is facing an unprecedented Climate Crisis. Unfortunately we still are trying to find an opportunity and make money out of it. All nations should have been fighting this battle together. Nevertheless, there are lots of things that can be done to successfully fight this battle. Provided we are ready to act. And The Time is Now.

I look forward to your inputs and support in preserving the last tracts of wilderness and wildlife of our beautiful country. For other interesting articles and images check - <http://www.indiawilds.com/forums/>

To post in the IndiaWilds forums, you can register free of cost using your Full Name as user id at -

<http://www.indiawilds.com/forums/register.php>

If you are already a member of IndiaWilds and have forgotten your user id and/or password you can mail administrator@indiawilds.com

Regards,

Sabyasachi Patra

[Profile](#) | [Contact](#) | [IndiaWilds Channel](#) | [Diary](#) | [Equipment reviews](#) | [Forums](#) | [Facebook](#)

Publisher's address: -
Plot No. 1, Akarpuri Colony,
Near Vaithal Temple, Old Town,
Bhubaneswar, 751002
Odisha
Mobile - +919910900446